

SFG

SEATTLE FUNDING GROUP LTD

Corporate Headquarters

188 108th Ave NE | Suite 600
Bellevue, WA 98004
PH: 425.455.1733 OR 888.734.3863
FAX: 425.454.7655

SFG of California Office

512 Via de la Valle | Suite 200
Solana Beach, CA 92075
PH: 858.751.0556 OR 888.751.0556

SFG of Arizona Office

7272 E Indian School Rd | Suite 540
Scottsdale, AZ 85251
PH: 480.450.3980

Ready to fund? We are!

SEATTLE FUNDING GROUP | THE ULTIMATE IN TRANSITIONAL
CAPITAL FOR OVER 29 YEARS

Seattle Funding Group is without a doubt the chief source in the Western U.S. for quick private transitional capital for residential and commercial real estate.

Since 1988, Seattle Funding Group has funded thousands of loans for mortgage professionals and their clients without credit lines or third party approvals.

- Direct portfolio lender.
- As principals to the SFG Family of Funds, we fund and service all loans in-house. This means faster more direct decision making for the borrower who appreciates the time value of money.
- For loan amounts \$500K to \$12M, we fund most loans in less than ten days for all types of borrowing entities, recognizing the time value of money.

Our commitment to service, speed and exceptional pricing is unmatched.



WITH SFG SINCE 1988

John Odegard
President/CEO



WITH SFG SINCE 1993

Greg Elderkin
Fund Manager/Principal



WITH SFG SINCE 1998

Kent Rowe
VP/Senior Underwriter



WITH SFG SINCE 2007

Charles Salas
Senior Underwriter
SFG of California



WITH SFG SINCE 1999

Ron Lorentsen
Senior Underwriter



WITH SFG SINCE 2017

Steve Ludeman
VP of Capital Markets

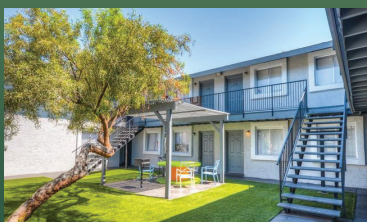
SFG SUCCESS STORIES



48x Borrower Builds Luxury Spec Home
Clyde Hill, WA
\$3,400,000



19x Borrower Acquires Two Properties
Petaluma, CA
\$1,885,000



48 Unit Apartment Community
Phoenix, AZ
\$1,750,000



WITH SFG SINCE 2016

Rodd Wagner
Underwriter
SFG of Arizona



WITH SFG SINCE 2011

Denise Tallman
Senior Loan Processor /
Loan Closer



WITH SFG SINCE 1993

Jan Jeffrey
Senior Accounting
Administrator



WITH SFG SINCE 2011

Larry Perry
Business Development
Manager



WITH SFG SINCE 2003

Charlene Salas
Senior Processor
SFG of California



WITH SFG SINCE 1997

Karin Case
Controller



WITH SFG SINCE 1999

Jim McBride
Construction Manager



WITH SFG SINCE 1999

Eric Benzel
Income Fund Administrator



WITH SFG SINCE 2015

Reid Wagner
Loan Progression Manager



WITH SFG SINCE 2015

Rebecca Dattilo
Marketing Designer /
Director



WITH SFG SINCE 2017

Xiameng Wu
Administrative Assistant



WITH SFG SINCE 2017

Sadie Tallman
Office Coordinator

REAL ESTATE CAPITAL AT THE SPEED OF BUSINESS®
CALL SEATTLE FUNDING GROUP

1.800.SFG.FUND
www.SeattleFundingGroup.com